

# LIHTC Projects Allocated from 1987-2012, and Percent African American in the Baltimore Region

**LIHTC Allocations 1987-2012**

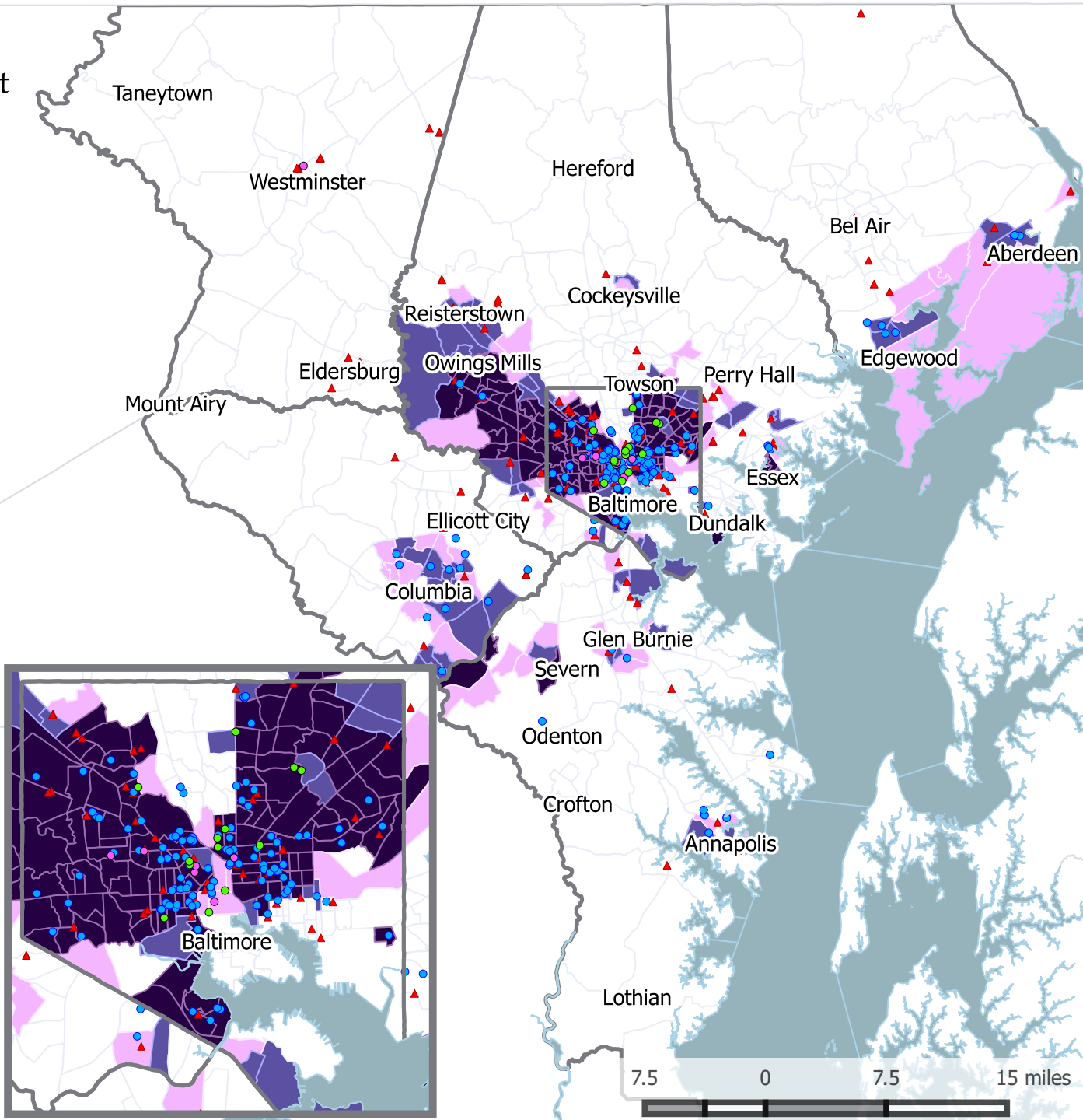
- ▲ Elderly LIHTC Project
- Family LIHTC Project
- Special Needs LIHTC Project
- Information Not Available

**2010 Census Tracts and Percent African American**

- 0-10%
- 10-19.9%
- 20-29.9%
- 30-49.9%
- 50-100%

Water

County Boundary



Source: ACLU of Maryland LIHTC Database, compiled from DHCD and HUD Sources; US Census Bureau, American Community Survey 5-Year Estimates, 2008-2012, Table DP05